

# BusinessWeek

NOVEMBER 3, 2003

A PUBLICATION OF MCGRAW-HILL COMPANIES

Special Advertising Section

## AS PUBLISHED IN BUSINESSWEEK'S ARCHITECTURAL DESIGN: INNOVATIVE SOLUTIONS

### INTERNATIONAL DESIGN GROUP

International Design Group (IDG) - The Firm's Principals, John E. Matthams and Jun A. Sillano, A.I.A., together with their associates, have developed a particular niche of select services in architecture, planning and interior design. Their work on high-end custom residences, hospitality, sports and fitness facilities, and commercial projects is known for its approach to providing unique solutions suited to each client's requirements.

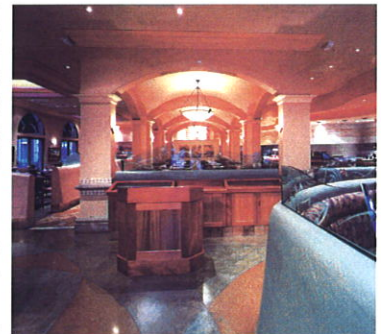


IDG's Custom Residential Division works with clients on a variety of levels ranging from small remodels to multi-million dollar estates in Pebble Beach, Asia and the Pacific and across the US.

The home below shows the owner's desire to create a unique and purist approach to architecture. IDG's solution, an environmentally respectful and integrated design. A one-of-a-kind "French Country"- style residence was created, well suited to its dramatic coastal setting

amongst natural sculpted cypress trees. Together with the owners, IDG took various elements of the structure and evaluated the concept to create the architectural style in its purist form.

IDG's Commercial Division works on projects that range from major tenant improvements, specialty restaurants, commercial structures, sport and recreational facilities throughout California, North America, and Russia. Steamer's Restaurant, in Los Gatos, California, pictured to the right. The task given to IDG was relocating an existing landmark restaurant to a new and larger operation within the shopping center. IDG proposed a solution to give the owners and customers



a unique experience in dining. The impressive but warm entry invites you into a new interior architectural space. The Mediterranean theme vaulted ceilings in the dining area leads to the open kitchen and bar, with its continuous and contoured ceiling line, creating the special ambiance throughout the restaurant.



JOHN E. MATTHAMS  
**INTERNATIONAL DESIGN GROUP**  
JUN A. SILLANO, a.i.a.

IDG works on many levels to specifically suit its clients' needs. Their design philosophy reflects an individualized approach with each project having unique and specific challenges. They act as shepherds to their clients assisting them to make their dreams and visions come to fruition.

**For More Information, Contact:**

**International Design Group**

**831.646.1261**

**www.jemidg.com**